

## Hibicus Leaf By Alcina Nolley



I love the atmosphere tropical leaves make.

Enamel on the silver clay helps to bring them alive to enjoy forever.

## The Forest By Alcina Nolley



I have louvers on my windows. When you open them up and look outside there is a sea of tropical green with spots of golden sunshine peeping through. That's what this enamel is about.

## Vintage Garden By Anna Mazon



First of all - thank you very much for this challenge :). Thanks to it I tried glass enamelling for the first time and I simply fell in love. Domed metal clay cabochon with flowery picture hand formed by me is filled with opaque enamels.

## **Goddess Rising** By B. Batt-Behar



The goddess rising is the inner strength found in all of us; whether we are joyful or in need of healing and re-finding that inner joy.

The luminescence of the enamels on the pmc reminds us of the light within us.

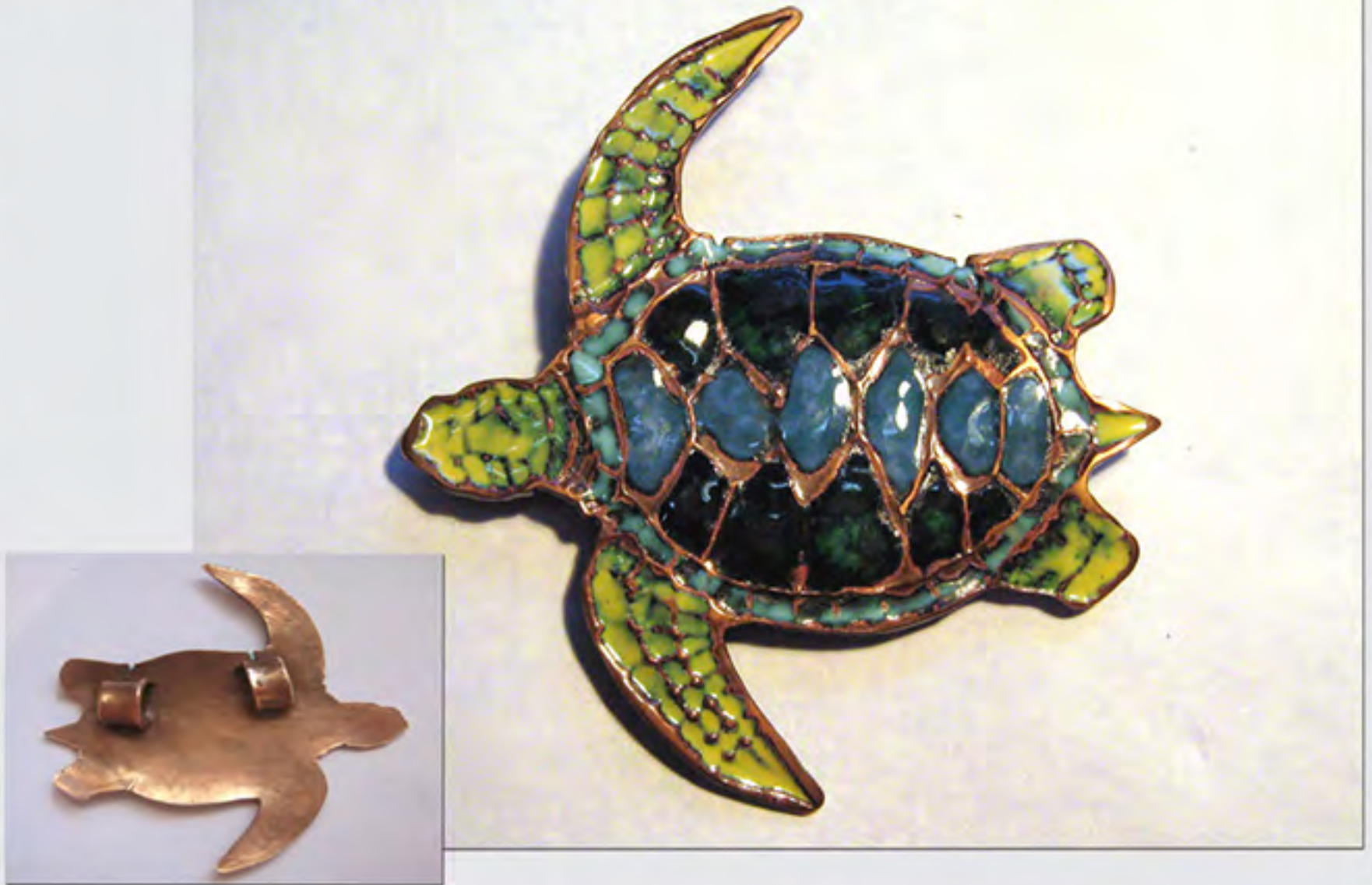
## Goldfish By Colleen White



I layered transparent colors over opaques to capture the swirl and speckles of color I see on the goldfish in my backyard pond.

I was aiming at an "Arthur Rackham" look - a favorite illustrator of mine.

## Sea Turtle By Colleen White



This is one of my favorite enamels. I started with opaque enamels over fired copper clay then layered transparent enamels over them for shading on the head and legs and to make a mottled look on the shell.

## About Faces By Ellen Solomons



About Faces brings to life my kaleidoscopic journey of color on silver metal clay. This work combines PMC+ , transparent enamel cloisonné, and beadwork to produce an inspired piece that readily meets the Enamored Juried Challenge criteria.

## Stars of the Sea By Ellen Solomons



Stars of the Sea exemplifies the versatility offered by combining PMC+, enamel, and a butane torch. The result is a graceful piece that demonstrates the creative, technically sound techniques required by the Enamored Juried Challenge.



## **Blue Fish** By Ginny Mintz

Viewers Choice Winner



**As a child I loved playing at the beaches, totally enamored by the water and its creatures. Now I use my enameled creations to attract the attention of my grandchildren who are also enamored by the Sea.**

## Izza By Goli Hendriks



As a silk painting artist for 20 years, colors are always my passion. When I have started making jewelry with metal clay I was missing colors. Then I have tried to give some colors to my jewelry by using enamel powders.

## Lily By Goli Hendriks



As a silk painting artist for 20 years, colors are always my passion. When I have started making jewelry with metal clay I was missing colors. Then I have tried to give some colors to my jewelry by using enamel powders.

## The Blue Wave By Monique Perry



**Second Place Winner!**

I recently learned to add color to my work by applying enamel directly to the fine silver. I particularly enjoy the transparent gradations of color over deep textures. "The Blue Wave " is an example of that process. The color is reminiscent of the ocean and is achieved with about five layers of enamel in total

## Falling in love By Patricia Marrone



"Enamored," my Hispanic background screamed "Falling in Love" (enamorado).

This pendant, although architecturally quite traditional, depicts what I envision falling in love to be. Within it's gates witness a tranquil scene which encompasses the elements of the theme "Enamored."

## Butterfly Wings By Robert Hawkins



Constructed with two layers of Art Clay Silver, this two sided pendant is enameled with various shades of blue, yellow and golden enamel.

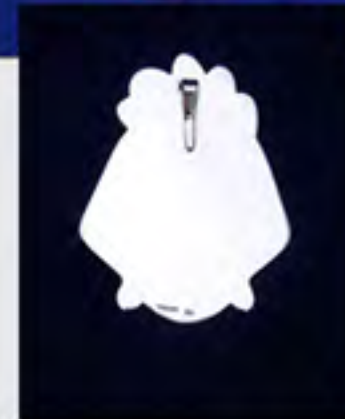
Piece is accompanied with an 18" fine silver chain with a beautiful twisted fine silver toggle clasp.

## India By Sheela Kiiski



I drew the peacocks with the beautiful tails on paper and etched it on copper sheet. Used the etched design as texture to imprint on metal clay silver and then formed the peacocks and tree with fine silver wire. It's enameled with Thompson enamels, using the Indian "Meenakari" blending method.

## Heron at Sunset By Sondra Hirssig



PMC is a wonderfully moldable medium that allowed my Heron to literally fly over the sunset

by setting him on top of the Basse Taille - Cloisonne background. PMC also made the Basse Taille technique easy with stamping instead of a rolling machine.

Leaded enamels were used to create the palate of colors.



## Mermaid By Sondra Hirssig



**First Place  
Winner!**



The moldability of PMC allowed me to create the frame and background for the mermaid to bring her environment to life. Seashells were molded. The background of the enamels are enhanced by the wave pattern to create the Basse Taille effect.

## Special Soy By Terri Sidell



Soybeans usually are found with 2-3 beans in the pod. This piece was created in honor of our Farmer friend who grows soybeans 4 beans to a pod. Since 4 beans to a pod is very rare, I thought this piece deserved to have the soybeans enameled in gold.

## Kim's Fish By Tina Carvalho



Enamored with silver clay, happily exploring textures and patinas. Eventually my work with creatures of the tropical oceans drove me to explore color as well! Now I am enamored with enamel. Hawaiian butterfly fish and coral in an aqua sea.

## Kushiro By Tina Carvalho



In Kushiro, Hokkaido, it was early spring, snow still on the ground. The startling red and blacks of the cranes contrasted with the expanses of milky white.